

## Vanagon Stow 'n Go seat Adapter Instructions

These instructions are based off of "Freshdub's" instructions on the Samba that can be found here. <https://www.thesamba.com/vw/forum/viewtopic.php?p=7999304>. A few changes such as using 2"x1" rectangular tubing and also providing some dimensions to take the guess work out of how long to make the adaptors and where to install them relative to the seat swivel and the seat sliders.

### Contents

Build Instructions for Stow and Go seats Adapter for Vanagons .....	1
Tools needed:.....	1
Materials needed:.....	1
Step 1: .....	2
Step 2: .....	2
Step 3: .....	3
Step 4: .....	4
Step 5: .....	5
Step 6: .....	5
Step 7: .....	7
Step 8: .....	7
Step 8: .....	7
Step 9: .....	7

#### Tools needed:

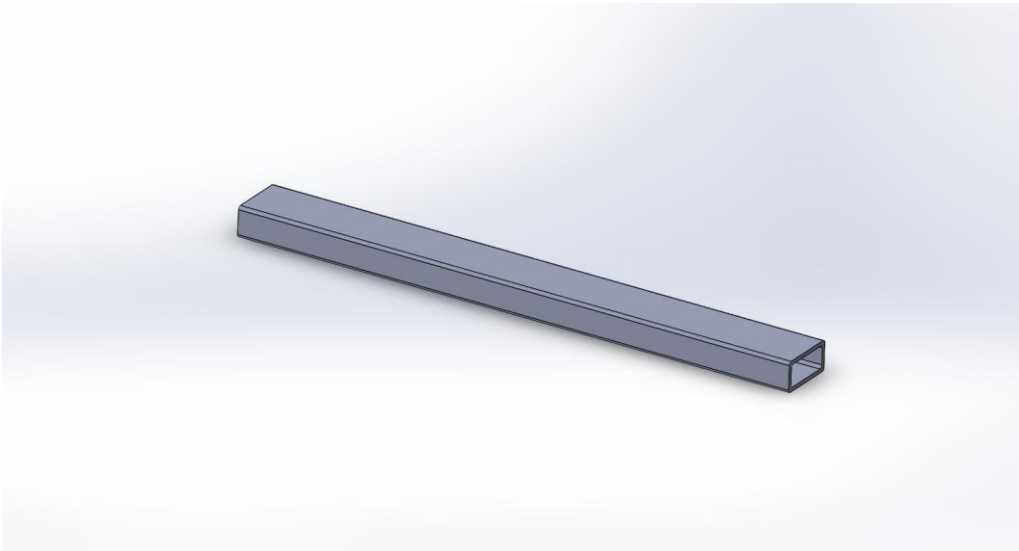
- Drill
- Drill bits
- Step drill
- Sockets
- Wrenches
- Grinder with cutoff wheel

#### Materials needed:

- (4) 2"x1"x0.125" Steel Rectangular tubing cut to 19" long (I was able to buy it from a local steel yard as scrap for \$10)
- (4) Grade 8 5/16"x3/4" Bolts
- (4) Grade 8 5/16"x1" Bolts
- (8) Grade 8 5/16" Nuts
- (16) 5/16" Washers

Instructions:

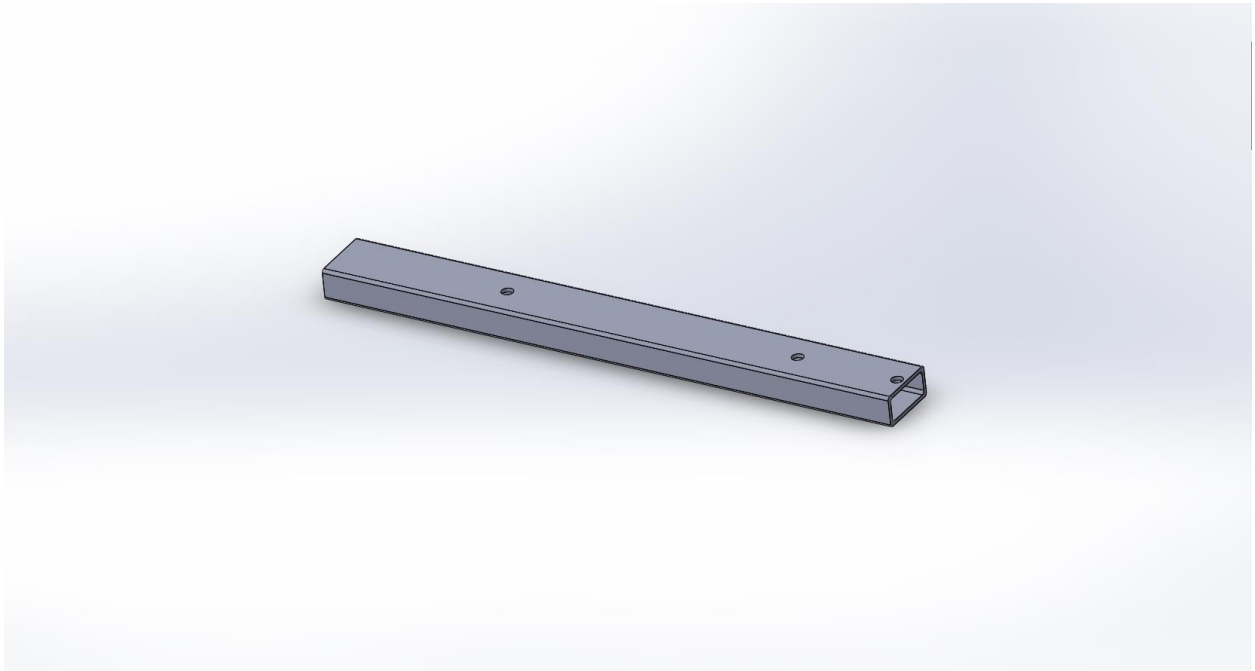
Step 1: Cut your 2"x1"x0.125" down to 19" if you haven't already. You will need 4 of these (2 per seat).



Step 2: The stow and go seats will have 3 bolts on each side. The rear will have a bolt about 3/8" from the edge. Drill a clearance hole for this bolt that lines up the 2"x1" flush with the end of the seat slider.



**Step 3:** Now you can measure the two remaining bolt locations and drill the clearance holes for these. On these two holes, drill completely through the 2"x1" and then use a step drill to open up the opposite side large enough for the socket that you will use to tighten the nut. Now you should have 3 bolt holes and 2 large clearance holes for a socket to secure the bracket to the seat.



Step 4: Bolt the 2"x1" to the seat. Next step is to have you seat swivels removed and line the front of the 2"x1" with the front of the seat swivel. Make sure you are centered and straight. I then used vice grips to hold the seat swivel to the 2"x1". This allows you to drill through the swivel and the 2"x1" at the same time so you know the holes will line up. Drill these four 5/16" clearance holes on the flat part of the seat swivel.





Step 5: Mark each adapter for the location that it is in (such as Driver left, Passenger Right...) since they need to go back in the same location when you remove them.

Step 6: Now you need to mark the inside of each 2"x1" for the opening you will cut to allow you to access the rear nut and bolt that goes through the 2"x1" and seat swivel. I used a cut off wheel and cut out a 1.5" long opening, 3.5" from the rear of the 2"x1". It definitely wasn't a pretty cut but you don't really see it when installed.









**Step 7:** Unbolt the adaptors completely and cut the opening. Now is the time to debur any sharp edges.

**Step 8:** Now is a good time to bolt the adaptors back on the seats and then reinstall the seat swivels in the van to make sure everything is all good. To bolt the seat and adaptors to the seat swivel you will need to rotate the swivel around to have a corner overhanging to allow the bolt to come up from the bottom and install the nut inside of the adaptors. If everything bolts up and seems good your brackets are done and you can remove them from the van and the seats.

**Step 8:** Clean up each adaptor and primer and paint them.

**Step 9:** Once the paint is dry, reinstall them first to the seat and then to the seat swivel. I used the 5/16"x1" bolts in the front and the 5/16"x3/4" in the rear.

**Note:** If you look at the sliding mechanism on the stow and go seats, there is a bent tab. You will want to bend the tab back to allow full motion of the sliding mechanism.

